

# 190 E POST RD

As exclusive agents for the building we are pleased to present

Great retail unit in the heart of White Plains!

Ground Floor

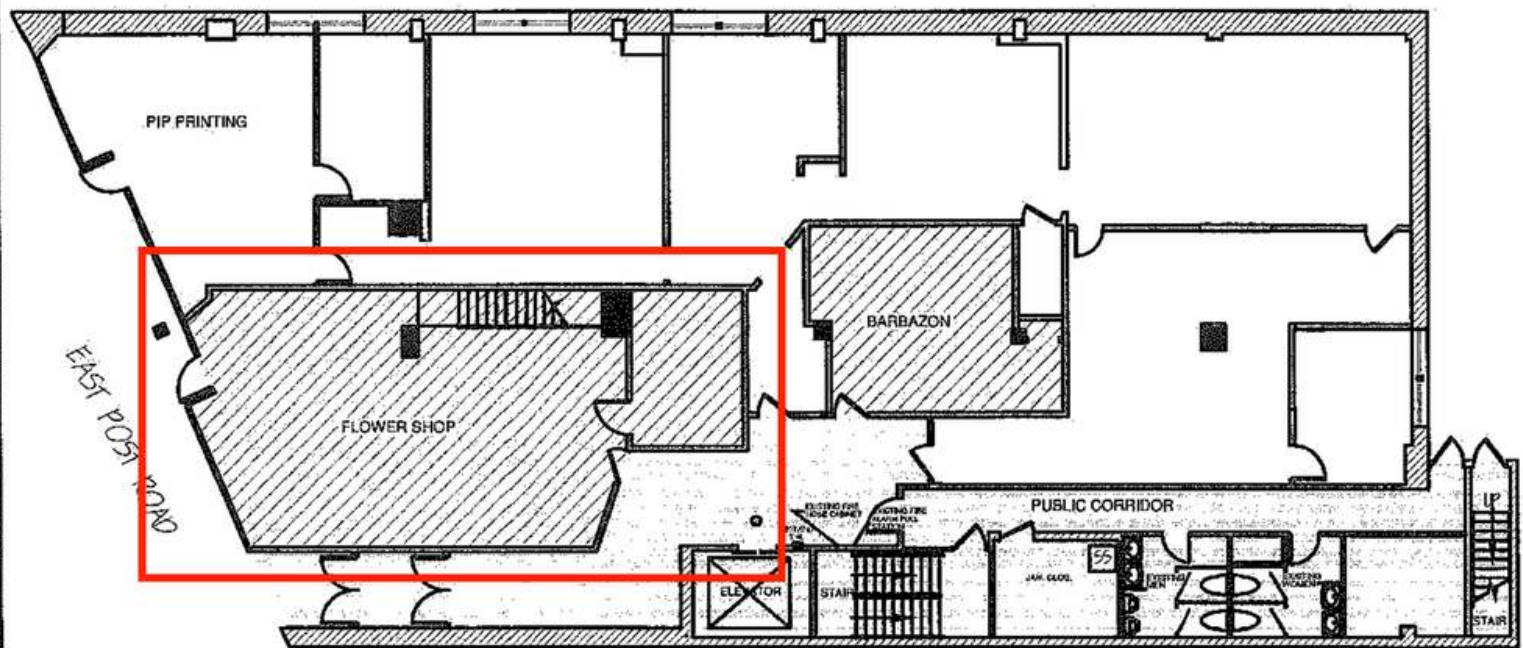
SIZE: 1,220 RSF

- Lower level of approximately the same size
- 18 Feet of sidewalk presence
- High ceilings

ASKING RENT: Inquire



## CURRENT LAYOUT



GROUND FLOOR LAYOUT PLAN

## CONTACT DETAILS

Joshua Winslow

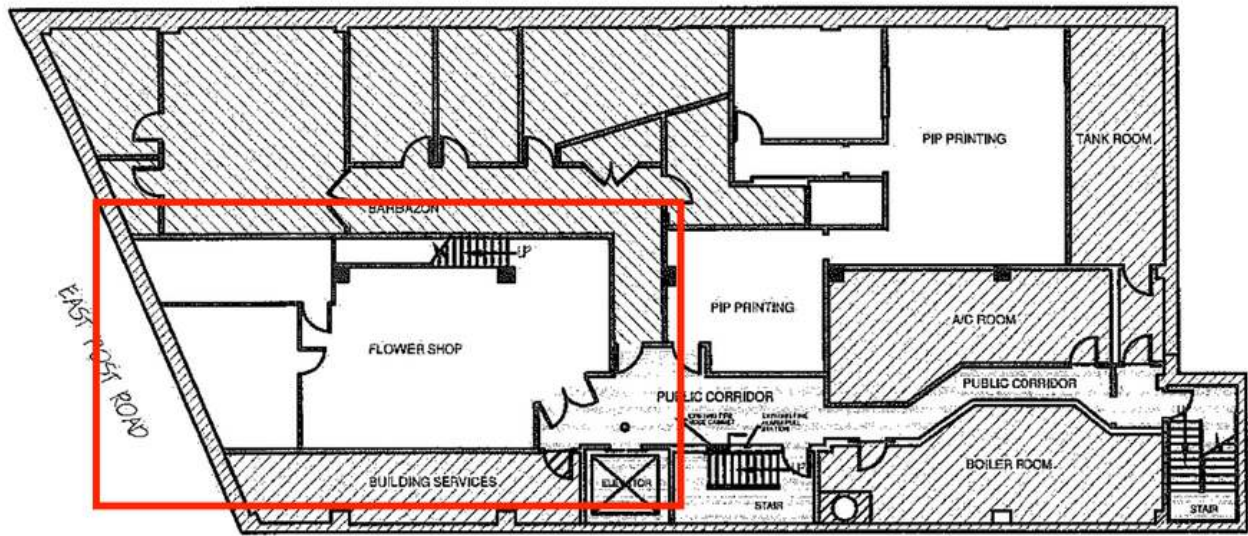
917-450-4538

josh@way2winny.com



# 190 E POST RD

As exclusive agents for the building we are pleased to present



CELLAR FLOOR LAYOUT

FLOWER SHOP	1,060 SQ.FT.
BARBAZON	1,859 SQ.FT.
PIP PRINTING	1,203 SQ.FT.



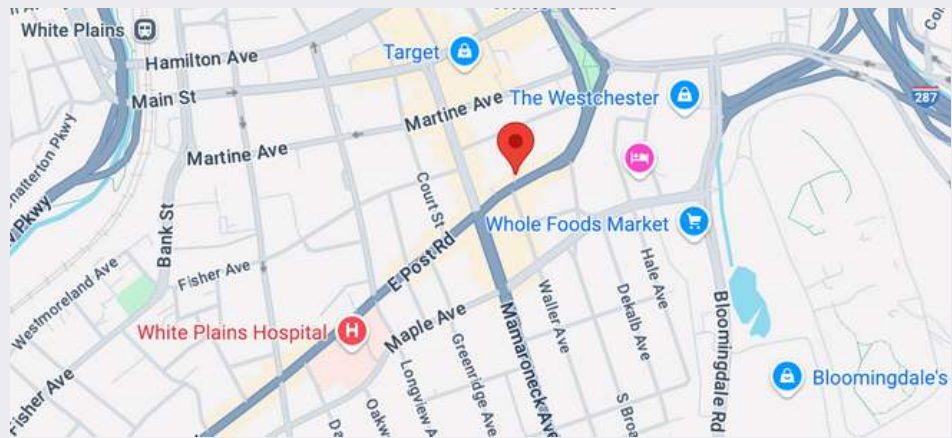
GROUND FLOOR



CELLAR

## ABOUT THIS PROPERTY

- 1 passenger elevator
- Flexible lease term and sizes
- Multiple Parking Garages nearby



## CONTACT DETAILS

Joshua Winslow

917-450-4538

josh@way2winnyc.com

Although information contained herein has been obtained from sources deemed reliable, neither Way2Win Management, Beekman Properties, nor any of their clients make any guarantees or representations, express or implied, as to the completeness or accuracy of such information. Neither Way2Win Management, Beekman Properties, nor any of their clients accepts any liability for loss resulting from reliance on such information. Any property offered for lease may be withdrawn without notice.